
Subject: Configuration Flags Windows -> Missing Captions and Buttons

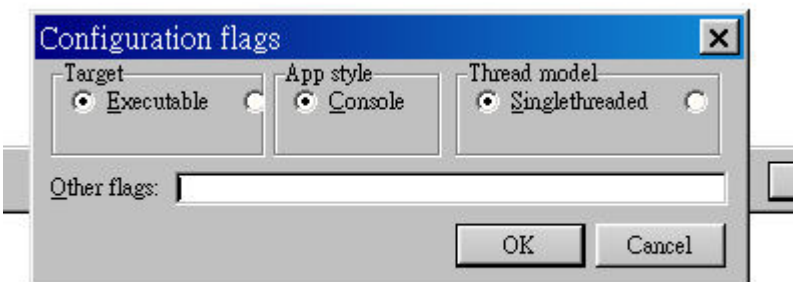
Posted by [3togo](#) on Tue, 09 May 2006 11:58:50 GMT

[View Forum Message](#) <> [Reply to Message](#)

Configuration Flags Windows -> Missing Captions and Buttons

File Attachments

1) [Image2.jpg](#), downloaded 2017 times



Subject: Re: Configuration Flags Windows -> Missing Captions and Buttons

Posted by [mirek](#) on Tue, 09 May 2006 12:31:19 GMT

[View Forum Message](#) <> [Reply to Message](#)

3togo wrote on Tue, 09 May 2006 07:58 Configuration Flags Windows -> Missing Captions and Buttons

This has something to do with default system font... What OS / setup is that?

Mirek

Subject: Re: Configuration Flags Windows -> Missing Captions and Buttons

Posted by [3togo](#) on Tue, 09 May 2006 12:35:46 GMT

[View Forum Message](#) <> [Reply to Message](#)

winxp

1280x1024

It seems to me that "switch button" could not wordwrap automatically.

Subject: Re: Configuration Flags Windows -> Missing Captions and Buttons

Posted by [3togo](#) on Tue, 09 May 2006 13:03:15 GMT

[View Forum Message](#) <> [Reply to Message](#)

I guess I've found where the bug comes from.

In Switch.cpp between line 202 and 211

```
//if(horz) {  
// x += hr.Width() + sz.cy / 2;  
// posx[i] = x;  
//}  
//else  
y += linecy;  
}  
//if(horz)  
// posx[i - 1] = sz.cx;  
}
```

theide sets horz to true by default which contradicts with the visual display shown by the layout editor.

By the way, is there any way to set "switch button" to vertical within the layout editor.

Many thanks

3togo

Subject: Re: Configuration Flags Windows -> Missing Captions and Buttons

Posted by [mirek](#) on Tue, 09 May 2006 13:18:17 GMT

[View Forum Message](#) <> [Reply to Message](#)

3togo wrote on Tue, 09 May 2006 09:03: I guess I've found where the bug comes from.

In Switch.cpp between line 202 and 211

```
//if(horz) {  
// x += hr.Width() + sz.cy / 2;  
// posx[i] = x;  
//}  
//else  
y += linecy;  
}  
//if(horz)  
// posx[i - 1] = sz.cx;  
}
```

theide sets horz to true by default which contradicts with the visual display shown by the layout editor.

By the way, is there any way to set "switch button" to vertical within the layout editor.

Many thanks

3togo

I am afraid it is more complicated and has a lot of to do with that font....

The normal behaviour is: If it fits vertically, it is vertical. If not, it is horizontal.

With normal windows font, that dialog looks OK. However, the font on the screenshot does not seem normal MS SansSerif or Tahoma. (font on screenshot obviously has serifs).

Of course, U++ is able to deal with that as well, as it scales layouts based on current font. So far, it worked OK on any platform tested. But in this particular case, something went wrong...

What is that font?

Mirek

Subject: Re: Configuration Flags Windows -> Missing Captions and Buttons
Posted by [3togo](#) on Tue, 09 May 2006 13:33:52 GMT

[View Forum Message](#) <> [Reply to Message](#)

Thank again for your quick reply.

Maybe you're right! Actually I am using Chinese Windows XP. In this regards, could I presume that the IDE miscalculates the width of a string of Asian Characters.

3togo

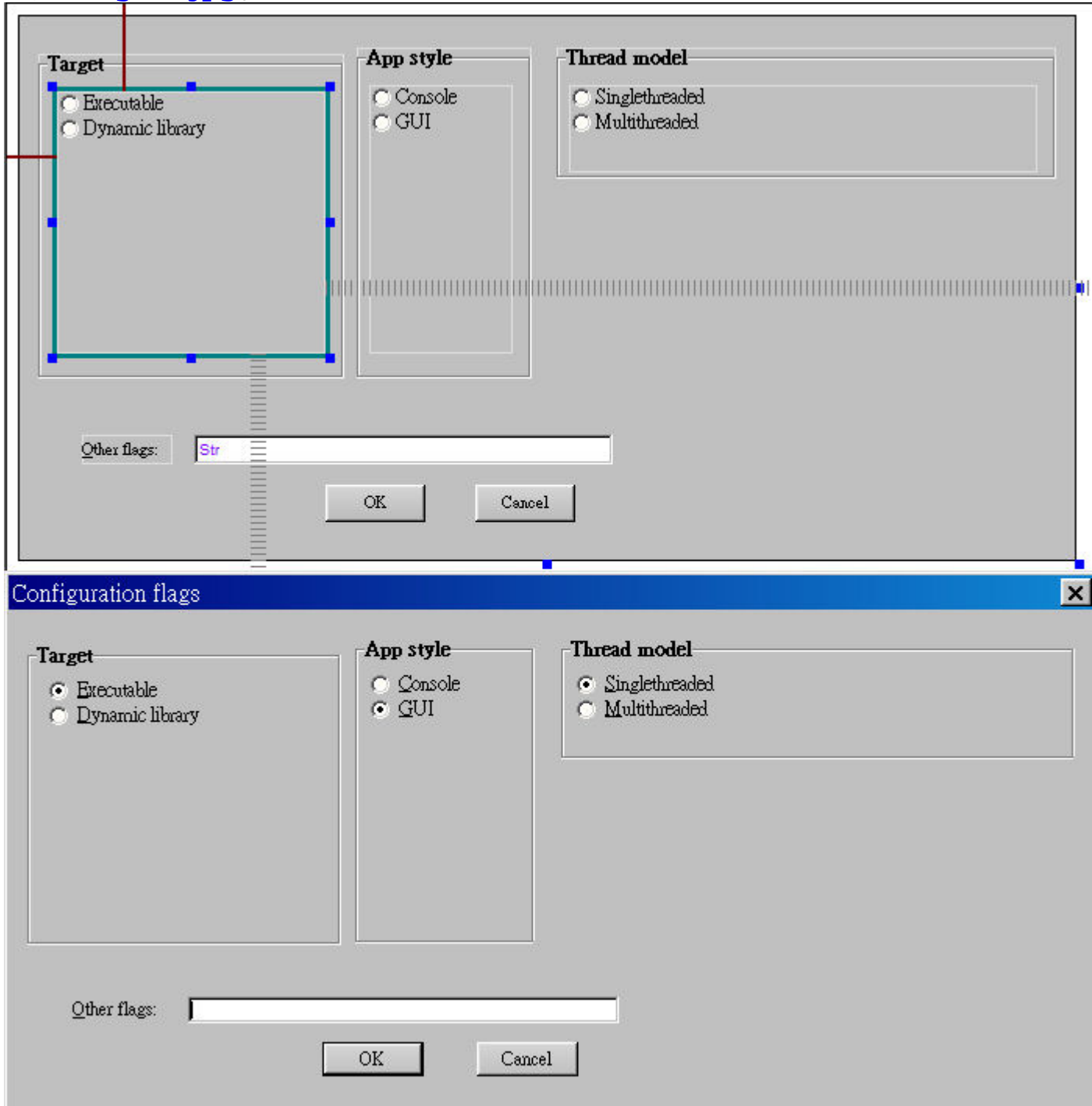
Subject: Re: Configuration Flags Windows -> Missing Captions and Buttons
Posted by [3togo](#) on Tue, 09 May 2006 13:47:37 GMT

[View Forum Message](#) <> [Reply to Message](#)

I totally agree at what u have said. By slightly adjusting the width of Switch Boxes, all the switch buttons could align vertically without any needs to change the codes. I guess it is merely a round-off problem on calculating the width of a string of Asian characters.

File Attachments

1) [Image2.jpg](#), downloaded 1927 times



Subject: Re: Configuration Flags Windows -> Missing Captions and Buttons
Posted by [mirek](#) on Tue, 09 May 2006 15:32:53 GMT

[View Forum Message](#) <> [Reply to Message](#)

It would be still interesting to trace down this problem (it should work in any case, given used

font-zoom technique...)

Mirek

Subject: Re: Configuration Flags Windows -> Missing Captions and Buttons
Posted by [3togo](#) on Tue, 09 May 2006 16:03:30 GMT
[View Forum Message](#) <> [Reply to Message](#)

Thank u for yr effort on developing such a wonderful tool. If I could be of any help, pls let me know.

When the IDE running in Gnome/Mandrake, the font size is surprisingly small. In this regards, I would like to suggest that the IDE should detect the screen resolution and adjust the font size used accordingly.

3togo

File Attachments

1) [snapshot1.png](#), downloaded 1960 times



Computer



Shared Folder



Makefile.txt



jc's Home



theide



MJ_dist.tar.gz



cycgame



upp



pykaraoke-0.4.1.zip



dbxfe



upp_src



upp-linux386-602.zip



etswitch-0.1.11



cchess.zip.gmail



wine-user.pdf



IMS



Trash



launch4j



Internet Explorer



DesignerTutorial0.htm



mahjong



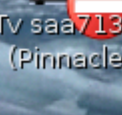
jujiangMahjiang.rar



DesignerTut



pyk



KdeTV saa7134[0]
video (Pinnacle PCTV)



mahjong.tar.bz2

Select main package (TheIDE)

Assembly	AddressBook	
examples	AddressBookXML	
MyApps	AnimatedHello	
reference	Bombs	
uppsrc	Button	
	Clock	
	cmdsrv	
	Color	
	CompDir	
	Converter	
	Days	
	HelloWorld	
	idmap	
	idmapBench	

All packages

Subject: Re: Configuration Flags Windows -> Missing Captions and Buttons
Posted by [mirek](#) on Wed, 10 May 2006 21:50:20 GMT
[View Forum Message](#) <> [Reply to Message](#)

The actual plan is to read gnome settings (or KDE, depends on what is active).

Mirek

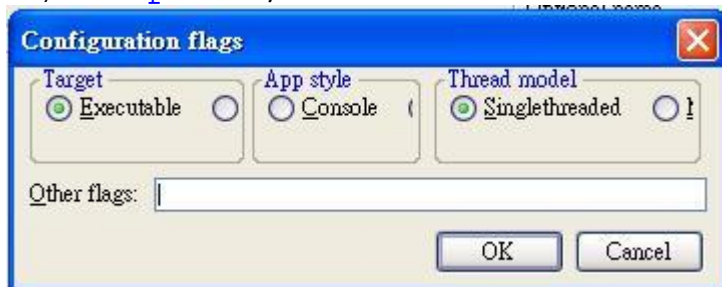
Subject: Re: B605-dev1 Configuration Flags Windows -> Missing Captions and Buttons
Posted by [3togo](#) on Mon, 22 May 2006 11:46:39 GMT
[View Forum Message](#) <> [Reply to Message](#)

See attached. Buttons are still missing in Chinese WinXP.

Thanks.

File Attachments

1) [temp.JPG](#), downloaded 1898 times



Subject: Re: [605-dev1] Configuration Flags Windows -> Missing Captions and Buttons
Posted by [3togo](#) on Mon, 22 May 2006 13:08:41 GMT
[View Forum Message](#) <> [Reply to Message](#)

To make the configuration Flags Windows displace everything properly, the width of label boxes have to be increased.

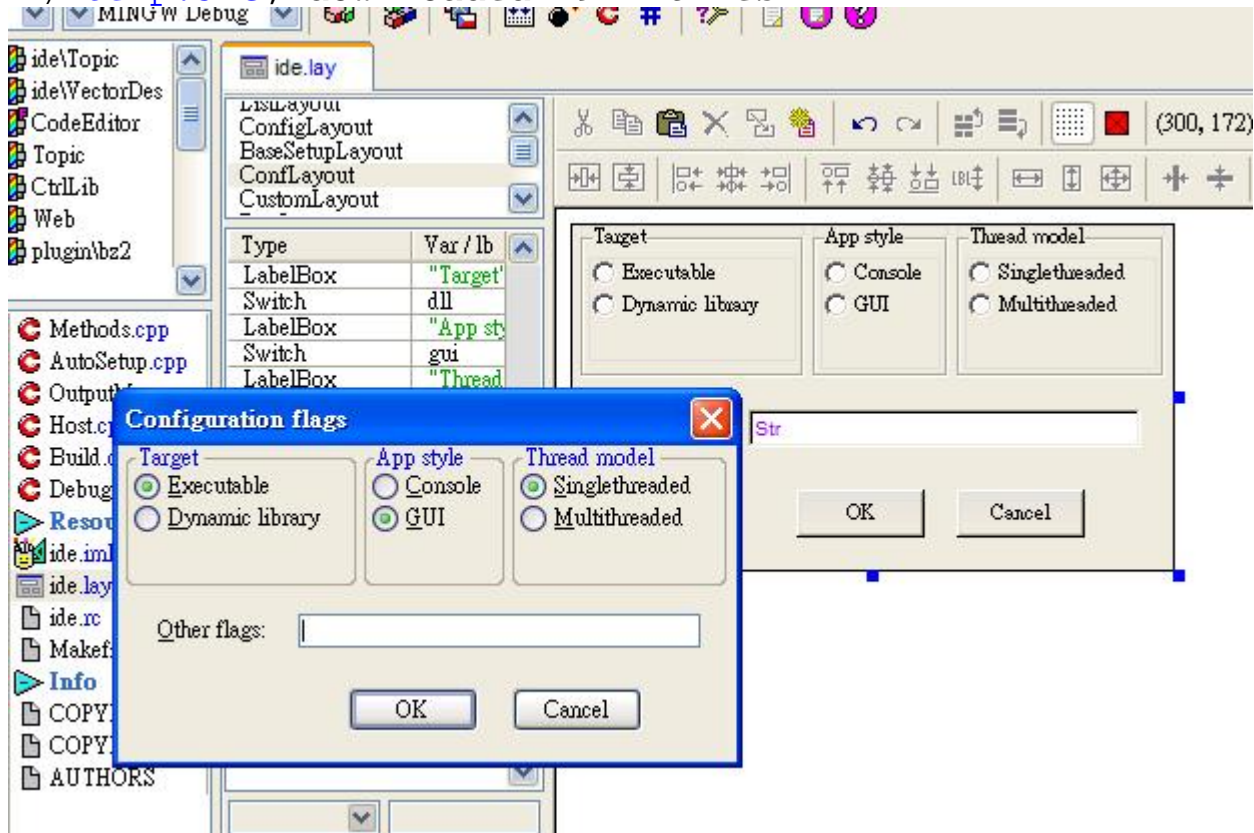
I seems that upp+ fail to get the actual width of "stdFont()" in Chinese WinXP.

The working layout was attached below.

3togo

File Attachments

1) [temp.JPG](#), downloaded 1912 times



Subject: Re: [605-dev1] Configuration Flags Windows -> Missing Captions and Buttons

Posted by [mirek](#) on Mon, 22 May 2006 20:21:26 GMT

[View Forum Message](#) <> [Reply to Message](#)

Hm, now looking at those screenshots, I think I have found the trouble...

It seems like the font height is in this case smaller than the height of switch button. That of course makes the height of Switch, after FontZoom rescaling, too small.

Interesting problem, I will have to find a way how to deal with that...

Mirek

Subject: Re: [605-dev1] Configuration Flags Windows -> Missing Captions and Buttons

Posted by [mirek](#) on Tue, 23 May 2006 10:37:16 GMT

[View Forum Message](#) <> [Reply to Message](#)

Well, I was thinking about the issue and here comes the fix:

CtrlCore/Ctrl.cpp 654:

```
inline void Ctrl::Csizeinit()
{
    if(Csize.cx == 0)
        Csize = ScreenInfo().GetTextSize(sZoomText);
    if(Dsize.cx == 0)
        Dsize = Size(99, 13);
    Csize.cx = max(Csize.cx, Dsize.cx);
    Csize.cy = max(Csize.cy, Dsize.cy);
}
```

Please, try to replace above function...

Note: There will be little appearance bug in switch button image - please ignore it for now, it is fixed as well, but fix is too scattered to post here (it will be fixed in next dev release, 5 days max)

Mirek

Subject: Re: [605-dev1] Configuration Flags Windows -> Missing Captions and Buttons

Posted by [tojocky](#) on Fri, 20 Jun 2008 22:23:01 GMT

[View Forum Message](#) <> [Reply to Message](#)

Interesting situation. With Csize and Dsize We can set zooming?
If we use SetZoomSize function and pos functions with suffix Z.
It is good idea! Thanks!
