
Subject: PostgreSQL Connection Errors

Posted by [nejnadusho](#) on Sat, 08 Dec 2012 04:18:29 GMT

[View Forum Message](#) <> [Reply to Message](#)

Hi,

I am trying to connect to PostgreSQL and it does not really work.
For now I am just trying to run the example in reference section.

I have the DB installed and it is working I have a working schema on it.
However, when I am running the U++ example I am getting the following errors.

With the MSC10 Debug compiles perfectly but I am getting the pop up on the print-screen collage.

And with MSC10x64 I am getting the compilation errors bellow the pop on the print-screen collage.

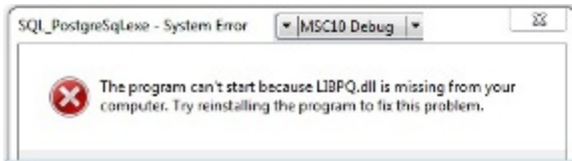
Please any suggestions and help are greatly appreciated.

Thank you.

Best,
Georgi

File Attachments

1) [Untitled.jpg](#), downloaded 936 times



```
----- CtrlLib ( GUI MSC10X64 DEBUG DEBUG_FULL BLITZ WIN32 MSC ) ( 1 / 16)
----- PostgreSQL ( GUI MSC10X64 DEBUG DEBUG_FULL BLITZ WIN32 MSC ) ( 2 / 16)
----- SqlCtrl ( GUI MSC10X64 DEBUG DEBUG_FULL BLITZ WIN32 MSC ) ( 3 / 16)
----- CtrlCore ( GUI MSC10X64 DEBUG DEBUG_FULL BLITZ WIN32 MSC ) ( 4 / 16)
----- Draw ( GUI MSC10X64 DEBUG DEBUG_FULL BLITZ WIN32 MSC ) ( 5 / 16)
----- plugin/wsp ( GUI MSC10X64 DEBUG DEBUG_FULL BLITZ WIN32 MSC ) ( 6 / 16)
----- RichText ( GUI MSC10X64 DEBUG DEBUG_FULL BLITZ WIN32 MSC ) ( 7 / 16)
----- Core ( GUI MSC10X64 DEBUG DEBUG_FULL BLITZ WIN32 MSC ) ( 8 / 16)
----- plugin/s ( GUI MSC10X64 DEBUG DEBUG_FULL BLITZ WIN32 MSC ) ( 9 / 16)
----- Docking ( GUI MSC10X64 DEBUG DEBUG_FULL BLITZ WIN32 MSC ) ( 10 / 16)
----- TabBar ( GUI MSC10X64 DEBUG DEBUG_FULL BLITZ WIN32 MSC ) ( 11 / 16)
----- plugin/gmg ( GUI MSC10X64 DEBUG DEBUG_FULL BLITZ WIN32 MSC ) ( 12 / 16)
----- Sql ( GUI MSC10X64 DEBUG DEBUG_FULL BLITZ WIN32 MSC ) ( 13 / 16)
----- Web ( GUI MSC10X64 DEBUG DEBUG_FULL BLITZ WIN32 MSC ) ( 14 / 16)
----- Report ( GUI MSC10X64 DEBUG DEBUG_FULL BLITZ WIN32 MSC ) ( 15 / 16)
----- SQL_PostgreSql ( GUI MAIN MSC10X64 DEBUG DEBUG_FULL BLITZ WIN32 MSC ) ( 16 / 16)
Linking...
PostgreSQL.obj : error LNK2019: unresolved external symbol PQerrorMessage referenced in function "private: class Upp::String __cdecl Upp::PostgreSQLConnection::ErrorMessage(
ng$2$XZ)
PostgreSQL.obj : error LNK2019: unresolved external symbol PQresultErrorField referenced in function "private: class Upp::String __cdecl Upp::PostgreSQLConnection::ErrorCod
e$2$XZ)
PostgreSQL.obj : error LNK2019: unresolved external symbol PQclear referenced in function "private: void __cdecl Upp::PostgreSQLSession::ExecTrans(char const *)" (?ExecTrans
PostgreSQL.obj : error LNK2019: unresolved external symbol PQresultStatus referenced in function "private: void __cdecl Upp::PostgreSQLSession::ExecTrans(char const *)" (?ExecTrans
PostgreSQL.obj : error LNK2019: unresolved external symbol PQexec referenced in function "private: void __cdecl Upp::PostgreSQLSession::ExecTrans(char const *)" (?ExecTrans
PostgreSQL.obj : error LNK2019: unresolved external symbol PQsocket referenced in function "private: void __cdecl Upp::PostgreSQLSession::DoKeepAlive(void)" (?DoKeepAlive
PostgreSQL.obj : error LNK2019: unresolved external symbol PQsetClientEncoding referenced in function "public: bool __cdecl Upp::PostgreSQLSession::Open(char const *)" (?Open
PostgreSQL.obj : error LNK2019: unresolved external symbol PQclientEncoding referenced in function "public: bool __cdecl Upp::PostgreSQLSession::Open(char const *)" (?Open
PostgreSQL.obj : error LNK2019: unresolved external symbol PQstatus referenced in function "public: bool __cdecl Upp::PostgreSQLSession::Open(char const *)" (?Open
PostgreSQL.obj : error LNK2019: unresolved external symbol PQconnectdb referenced in function "public: bool __cdecl Upp::PostgreSQLSession::ReOpen(void)" (?ReOpen
PostgreSQL.obj : error LNK2019: unresolved external symbol PQfinish referenced in function "public: void __cdecl Upp::PostgreSQLSession::Close(void)" (?Close
PostgreSQL.obj : error LNK2019: unresolved external symbol PQescapeStringConn referenced in function "protected: virtual void __cdecl Upp::PostgreSQLConnection::SetParam(int, class Upp
@Upp$HKAARHABVValue$2$8Z)
PostgreSQL.obj : error LNK2019: unresolved external symbol PQfreeconn referenced in function "protected: virtual void __cdecl Upp::PostgreSQLConnection::SetParam(int, class Upp
@Upp$HKAARHABVValue$2$8Z)
PostgreSQL.obj : error LNK2019: unresolved external symbol PQescapeBytesConn referenced in function "protected: virtual void __cdecl Upp::PostgreSQLConnection::SetParam(int, class Upp
@Upp$HKAARHABVValue$2$8Z)
PostgreSQL.obj : error LNK2019: unresolved external symbol PQconnTuple referenced in function "protected: virtual bool __cdecl Upp::PostgreSQLConnection::Execute(void)" (?Execute
PostgreSQL.obj : error LNK2019: unresolved external symbol PQftype referenced in function "protected: virtual bool __cdecl Upp::PostgreSQLConnection::Execute(void)" (?Execute
PostgreSQL.obj : error LNK2019: unresolved external symbol PQfmod referenced in function "protected: virtual bool __cdecl Upp::PostgreSQLConnection::Execute(void)" (?Execute
PostgreSQL.obj : error LNK2019: unresolved external symbol PQsize referenced in function "protected: virtual bool __cdecl Upp::PostgreSQLConnection::Execute(void)" (?Execute
PostgreSQL.obj : error LNK2019: unresolved external symbol PQfname referenced in function "protected: virtual bool __cdecl Upp::PostgreSQLConnection::Execute(void)" (?Execute
PostgreSQL.obj : error LNK2019: unresolved external symbol PQnfields referenced in function "protected: virtual bool __cdecl Upp::PostgreSQLConnection::Execute(void)" (?Execute
PostgreSQL.obj : error LNK2019: unresolved external symbol PQnparams referenced in function "protected: virtual bool __cdecl Upp::PostgreSQLConnection::Execute(void)" (?Execute
PostgreSQL.obj : error LNK2019: unresolved external symbol PQexecParams referenced in function "protected: virtual bool __cdecl Upp::PostgreSQLConnection::Execute(void)" (?Execute
PostgreSQL.obj : error LNK2019: unresolved external symbol PQunescapeBytes referenced in function "protected: virtual void __cdecl Upp::PostgreSQLConnection::GetColumn(int, class Upp
@Upp$HKAARHABVValue$2$8Z)
PostgreSQL.obj : error LNK2019: unresolved external symbol PQgetvalue referenced in function "protected: virtual void __cdecl Upp::PostgreSQLConnection::GetColumn(int, class Upp
@Upp$HKAARHABVValue$2$8Z)
PostgreSQL.obj : error LNK2019: unresolved external symbol PQgetisnull referenced in function "protected: virtual void __cdecl Upp::PostgreSQLConnection::GetColumn(int, class Upp
@Upp$HKAARHABVValue$2$8Z)
PostgreSQL.obj : error LNK2019: unresolved external symbol PQuser referenced in function "protected: virtual class Upp::String __cdecl Upp::PostgreSQLConnection::GetUser(void)
$2$XZ)
C:\app\out\reference\MSC10x64.Debug.Debug_Full.Gui\SQL_PostgreSql.exe : fatal error LNK1120: 29 unresolved externals

There were errors. (0:01.01)
```

Subject: Re: PostgreSQL Connection Errors
Posted by [Lance](#) on Sat, 08 Dec 2012 12:54:29 GMT
[View Forum Message](#) <> [Reply to Message](#)

Unlike SqlLite, U++ support PostgreSql externally. PostgreSql's client interface source code is not included in U++. So your program compiles fine but when linking, it failed because undefined symbols.

To fix that, you should include the postgresql library path in the link path. I remember somewhere in the manual it's taught on how to add library and library path.

Subject: Re: PostgreSQL Connection Errors

Posted by [Lance](#) on Sat, 08 Dec 2012 13:00:31 GMT

[View Forum Message](#) <> [Reply to Message](#)

refer to:

[http://www.ultimatepp.org/app\\$ide\\$ConfiguringPackagesAssemblies\\$en-us.html](http://www.ultimatepp.org/appideConfiguringPackagesAssemblies$en-us.html)

Quote:

Package build settings

From TheIDE project menu, select package-organizer.

The package organizer allows the setting of a number of things affecting the package build process. The "When" column allows control of when the item in the right hand column is applied. In the above example, the -I compiler option is applied with GCC compiler and /I is applied with the Microsoft (MSC71) compiler.

Target file override. Allows specification of a name for the final executable. The default name is the package name.

Additional libraries. Allows specification of the path and name of object file libs and shared libraries that will be supplied to the linker.

Compiler options. These are text strings that will be supplied on the command line to the compiler. These will be added to the command line after (at the end of) the compiler options generated by TheIDE. These options affect all source files being compiled, not just those from the main package, however you can use build flags and the "dotted" mechanism (see Package-build-configurations above) to restrict which packages the options are applied to.

Link options. These are text strings that will be supplied on the command line to the linker. These will be added to the command line after (at the end of) the linker options generated by TheIDE.

You can also set additional compiler options for individual source files. In the "additional dependencies" list you can specify a list of files that a source file is dependent on. This means TheIDE will check these additional files to determine whether a source file should be rebuilt.

Subject: Re: PostgreSQL Connection Errors

Posted by [nejnadusho](#) on Sat, 08 Dec 2012 14:35:28 GMT

[View Forum Message](#) <> [Reply to Message](#)

Lance,

I am sorry I did not mention that I already linked the the Postgresql include and lib as per Mirek's post here

Best,
Georgi

Subject: Re: PostgreSQL Connection Errors
Posted by [Lance](#) on Sat, 08 Dec 2012 16:20:34 GMT
[View Forum Message](#) <> [Reply to Message](#)

Then you probably didn't do the library and library path part right.

You need to tell the c++ linker you are using libpq.lib, and also you need to tell the linker where to find the lib file.

Can you post a screen shot of your main package package organizer?

Subject: Re: PostgreSQL Connection Errors
Posted by [nejnadusho](#) on Sat, 08 Dec 2012 16:58:09 GMT
[View Forum Message](#) <> [Reply to Message](#)

Lance,

I am not sure i understand what you mean with

Quote:

Can you post a screen shot of your main package package organizer?

Also I have another question.

Lets say I set it up correctly and start working locally.

When it comes time to compile the project and more specifically the server side app.
Before I compile the app do I have to again make all those references and setups with the appropriate paths to the server's database?

Thank you very much.

Best,
Georgi

Subject: Re: PostgreSQL Connection Errors
Posted by [nejnadusho](#) on Sat, 08 Dec 2012 17:43:18 GMT
[View Forum Message](#) <> [Reply to Message](#)

Feed:

I re-installed the postgresql db and did the whole set up again .

now the only compile error I am getting is

Quote:

LINK : fatal error LNK1104: cannot open file 'libpq.lib'

Again I am currently trying to run the reference SqlPostgres.

Thank you.

Best,
Georgi

Subject: Re: PostgreSQL Connection Errors
Posted by [Lance](#) on Sat, 08 Dec 2012 18:29:47 GMT
[View Forum Message](#) <> [Reply to Message](#)

On Linux, you should be fine. On windows, you can copy those *.dll to your executable folder if it's not going to be used by other programs, otherwise you can copy it to windows systems folder. It's recommended you copy the *.dll(s) that you developed and linked with. Different versions of pg client dlls might not be compatible with each other.

Subject: Re: PostgreSQL Connection Errors
Posted by [Lance](#) on Sat, 08 Dec 2012 18:55:42 GMT
[View Forum Message](#) <> [Reply to Message](#)

Search Path Used by Windows to Locate a DLL

<http://msdn.microsoft.com/en-us/library/7d83bc18%28v=vs.80%29.aspx>

The link error could be you did not set library search path correctly in U++ Package organizer.

For extra library, you need to supply both library name and its path. I suspect you did the first part but didn't do the second part or you didn't do it correctly.

Subject: Re: PostgreSQL Connection Errors
Posted by [Lance](#) on Sat, 08 Dec 2012 19:36:17 GMT
[View Forum Message](#) <> [Reply to Message](#)

In Upp main menu, click Project/Package Organizer

At somewhere in the top right pane, right click, select "New Link Option..."

In the dialog, put MSC in the left, and something similar to
/LIBPATH:"C:\Program Files\PostgreSQL\9.1\lib"
in the right.

Let me know if it fixes your problem. I assume you are using MSVC tool chain.

Subject: Re: PostgreSQL Connection Errors
Posted by [nejnadusho](#) on Sat, 08 Dec 2012 20:04:32 GMT
[View Forum Message](#) <> [Reply to Message](#)

Here are my package organizer and build methods screens.

On the build method screen the lib and include folder paths are included under the appropriate tab the same way the bin is, I just did not want to make more screen shots.

Best,
Georgi

File Attachments

1) [Desktop.zip](#), downloaded 305 times

Subject: Re: PostgreSQL Connection Errors
Posted by [nejnadusho](#) on Sat, 08 Dec 2012 20:44:19 GMT
[View Forum Message](#) <> [Reply to Message](#)

Lance,

I connected.

You are my PostgreSql guru !!!

Whatever you see on the screenshots I posted, I just added

Quote:

In the dialog, put MSC in the left, and something similar to
/LIBPATH:"C:\Program Files\PostgreSQL\9.1\lib"
in the right.

Which is more like right click Add New Link and following your instruction above.

However, I have issues with the database I think I have to re install it again.

Also is it possible for you to post a basic example of connecting to an existing db and very simple Select/Insert queries in U++.

Thank you a lot.

Best,
Georgi

Subject: Re: PostgreSQL Connection Errors
Posted by [nejnadusho](#) on Sat, 08 Dec 2012 21:19:19 GMT
[View Forum Message](#) <> [Reply to Message](#)

Lance,

It works

I can run the example in the reference library.

How can I specify the port number to which I want it to connect?

I looked at the PostgreSQL class in U++ and I did not see it there.

And this query syntax in U++ is so alien to me.

Thank you so much again and again.

Best,
Georgi

Subject: Re: PostgreSQL Connection Errors
Posted by [DOTMPP](#) on Sat, 08 Dec 2012 21:43:50 GMT
[View Forum Message](#) <> [Reply to Message](#)

edit: I'll make my own thread for this question.

Subject: Re: PostgreSQL Connection Errors
Posted by [nneilson](#) on Sat, 08 Dec 2012 23:01:56 GMT
[View Forum Message](#) <> [Reply to Message](#)

Georgi

You can use most port numbers but it may be a good idea to use one that is not registered.
http://en.wikipedia.org/wiki/List_of_TCP_and_UDP_port_numbers

Subject: Re: PostgreSQL Connection Errors
Posted by [nejnadusho](#) on Sun, 09 Dec 2012 00:08:24 GMT
[View Forum Message](#) <> [Reply to Message](#)

nneilson,

Thank you.

I know that.

My question was how can I specify that when opening the connection?

Best,
Georgi

Subject: Re: PostgreSQL Connection Errors
Posted by [Lance](#) on Sun, 09 Dec 2012 01:08:28 GMT
[View Forum Message](#) <> [Reply to Message](#)

You are welcome.

This code is from the reference example SQLPostgreSQL (or something like this)

```
bool PostgreSQLTest::OpenDB()
{
    if(!m_session.Open("host=localhost dbname=test user=test password=test"))
    {
        Exclamation(Format("Error in open: %s", DeQtf(m_session.GetLastError())));
        return false;
    }
    m_array.SetSession(m_session);
}
```

You should be able to supply the correct host, and one of your actual db, user and password. For

the port part, you should be able to add something like port=5433 to that string.

```
!m_session.Open("host=localhost port=5433 dbname=mydb user=myusername  
password=mypassword")
```

....

Let me know if it didn't work for you.
