

---

Subject: S7DataArchiver

Posted by [mubeta](#) on Mon, 06 Sep 2010 08:42:28 GMT

[View Forum Message](#) <> [Reply to Message](#)

---

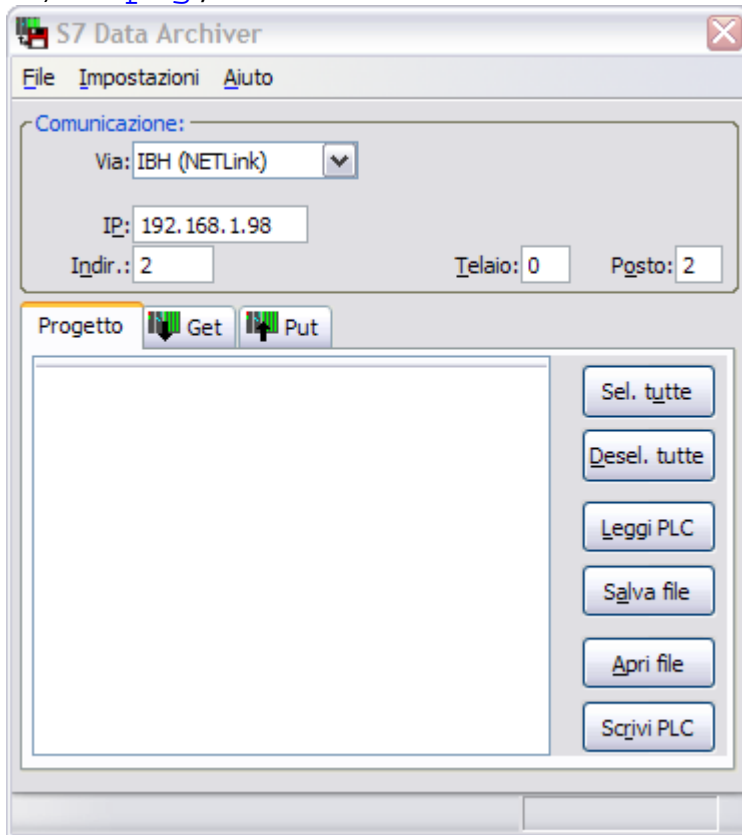
Backup and restore Siemens S7 PLC data block with a few clicks.  
Web site

Freeware. Include sources.

Two languages: italian and english.

## File Attachments

1) [1.png](#), downloaded 1328 times



---

Subject: Re: S7DataArchiver

Posted by [jerson](#) on Mon, 13 Sep 2010 15:27:02 GMT

[View Forum Message](#) <> [Reply to Message](#)

---

Thanks mubeta for posting this excellent work.

As a newbie, I am a bit lost at the amount of features present in Upp that are not documented and you have used. By using your code as a reference, I have progressed quite a bit in my coding and Upp style.

I wonder if you can spend a little time explaining the use of the .icpp file, variations of iml.h, iml\_header.h and iml\_source.h which is used when.

Regards

---

---

Subject: Re: S7DataArchiver  
Posted by [mubeta](#) on Mon, 13 Sep 2010 18:13:43 GMT  
[View Forum Message](#) <> [Reply to Message](#)

---

Quote:I wonder if you can spend a little time explaining the use of the .icpp file, variations of iml.h, iml\_header.h and iml\_source.h which is used when.

I am sorry, I am not able to explain for two reason: I am not an U /C developer and so, I also find very hard to understand all. I reached this and other results only spending lot of time and tests; second, you can see, english is not my preferred language.

I think that U++ developers will help you. Just post your questions in the correct forum.

---

---

Subject: Re: S7DataArchiver  
Posted by [cbpporter](#) on Mon, 13 Sep 2010 19:03:47 GMT  
[View Forum Message](#) <> [Reply to Message](#)

---

iml.h is meant to be used when you need the image data in a single \*.cpp file. Think of private data for that file. It is safe to never use it if you find it confusing.

In rest, including image data is like including classes. You need the definitions. These are available in iml\_header.h. You can include this file in headers so that multiple compilation units have access to it. Then iml\_source.h. has the definitions. It must be included a single time in a single \*.cpp file.

The above comments are valid for a single \*.iml. But you can repeat the process for multiple image lists.

I never used \*.icpp system, so I can't help you there.

---