

---

Subject: Non-english symbols unreadable [solved w/ SetDefaultCharset]

Posted by [Mindtraveller](#) on Sun, 30 Sep 2007 02:00:29 GMT

[View Forum Message](#) <> [Reply to Message](#)

---

It`s some kind of simple question which must have simple answer.

I`m adding layout with non-english label names. I start application, and these symbols aren`t displayed.

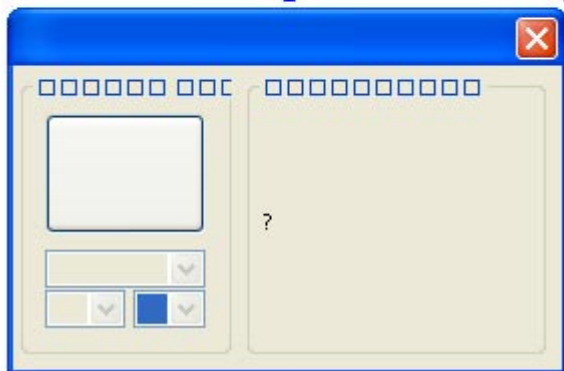
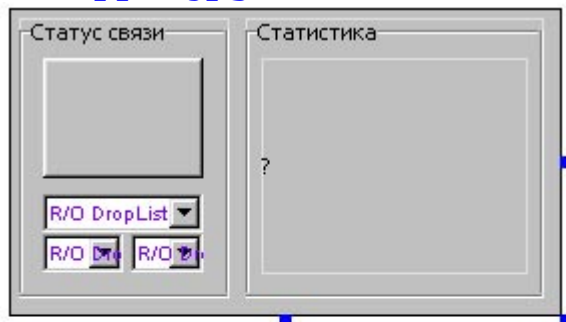
How to resolve it?

OS: WinXP SP2 Russian

U++: 708-dev1

### File Attachments

1) [uppl.jpg](#), downloaded 941 times



---

Subject: Re: Non-english symbols unreadable

Posted by [mirek](#) on Sun, 30 Sep 2007 05:44:21 GMT

[View Forum Message](#) <> [Reply to Message](#)

---

Mindtraveller wrote on Sat, 29 September 2007 22:00It`s some kind of simple question which must have simple answer.

I`m adding layout with non-english label names. I start application, and these symbols aren`t displayed.

How to resolve it?

OS: WinXP SP2 Russian  
U++: 708-dev1

Make sure the codepage of .lay matches the codepage of application.

Codepage of application is defined by SetDefaultCharset in MAIN.

Mirek

---

---

Subject: Re: Non-english symbols unreadable  
Posted by [Mindtraveller](#) on Sun, 30 Sep 2007 09:16:08 GMT  
[View Forum Message](#) <> [Reply to Message](#)

---

Yes, that`s it! You surely know how to do things right  
Thanks very much!

---