
Subject: TheIDE crashes when editing iml files
Posted by [yeohhs](#) on Wed, 01 Nov 2006 08:05:21 GMT
[View Forum Message](#) <> [Reply to Message](#)

Hi,

While editing several iml files, theIDE crashes.
I noticed that this happens when I edit one iml file and when I switch to another iml file, theIDE crashes. This has happened several times.

See attached screen shot.

I'm using Ultimate++ 610-dev4.

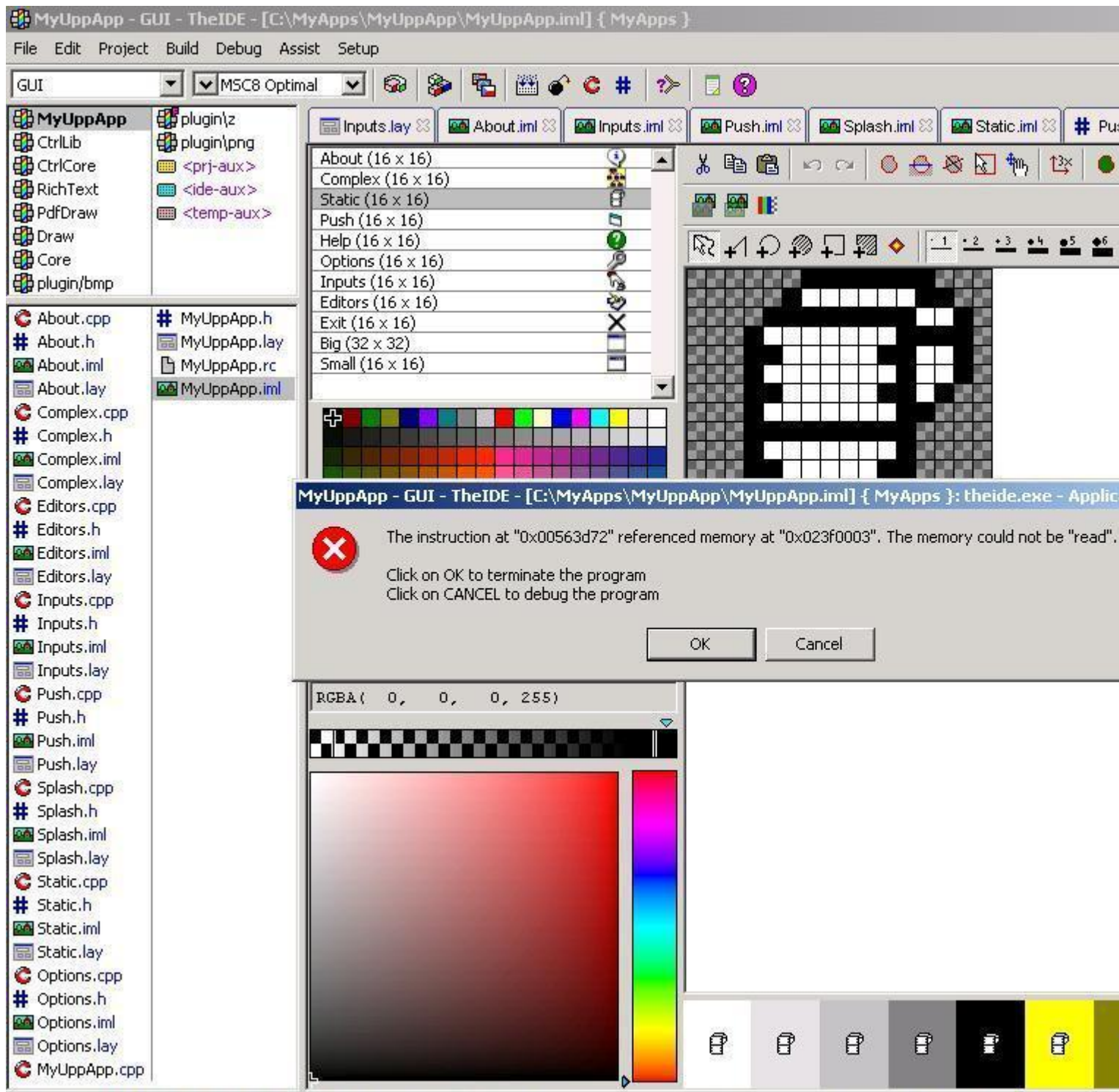
Thanks and best regards,
Yeoh

--

P.S. OS used is Win2K SP4

File Attachments

1) [theide.jpg](#), downloaded 2725 times



Subject: Re: TheIDE crashes when editing iml files
Posted by [mirek](#) on Wed, 01 Nov 2006 08:41:39 GMT
[View Forum Message](#) <> [Reply to Message](#)

Having hard times reproducing (does not crashes here). There must be some slight difference on

what I am doing and you are doing...

Do you think you could send me the package and exact description of steps to achieve the crash?

Mirek

Subject: Re: TheIDE crashes when editing iml files
Posted by [yeohhs](#) on Wed, 01 Nov 2006 10:46:24 GMT
[View Forum Message](#) <> [Reply to Message](#)

Here are the steps:

Step 1. When the package is loaded, it shows MyUppApp.iml.
Step 2. Click "About.iml" in left window, now we see About.iml.
Step 3. Now click the tab, switching from MyUppApp.iml to About.iml and back, a few times.

On my pc, I reloaded theIDE and tried this several times and in all cases, theIDE crashed. On my pc, this appears to be consistent.

I've attached the package.

Thanks and best regards,
Yeoh

File Attachments

1) [myuppapp_imlcrash.7z](#), downloaded 2578 times

Subject: Re: TheIDE crashes when editing iml files
Posted by [fallingdutch](#) on Wed, 01 Nov 2006 10:50:20 GMT
[View Forum Message](#) <> [Reply to Message](#)

Hello Yeoh,
have a look at this topic, too:
<http://www.arilect.com/upp/forum/index.php?t=msg&goto=6159>

seems like i have a similar problem.

It appears when
Starting a new empty package, creating a package directory iml-File and then inserting a picture from the clipboard.

does this work at yours, too?

Bas

Subject: Re: TheIDE crashes when editing iml files
Posted by [fallingdutch](#) on Wed, 01 Nov 2006 11:03:27 GMT
[View Forum Message](#) <> [Reply to Message](#)

Mine crashes only in debug mode, in which mode did you compile the ide? debug or release?

Bas

Subject: Re: TheIDE crashes when editing iml files
Posted by [mirek](#) on Wed, 01 Nov 2006 11:09:28 GMT
[View Forum Message](#) <> [Reply to Message](#)

fallingdutch wrote on Wed, 01 November 2006 06:03Mine crashes only in debug mode, in which mode did you compile the ide? debug or release?

Bas

I rather think these are two distinct problems, yours being 64-bit related...

Mirek

Subject: Re: TheIDE crashes when editing iml files
Posted by [mirek](#) on Wed, 01 Nov 2006 11:22:57 GMT
[View Forum Message](#) <> [Reply to Message](#)

yeohhs wrote on Wed, 01 November 2006 05:46Here are the steps:

- Step 1. When the package is loaded, it shows MyUppApp.iml.
- Step 2. Click "About.iml" in left window, now we see About.iml.
- Step 3. Now click the tab, switching from MyUppApp.iml to About.iml and back, a few times.

On my pc, I reloaded theIDE and tried this several times and in all cases, theIDE crashed. On my pc, this appears to be consistent.

I've attached the package.

Thanks and best regards,
Yeoh

Still no crash... Perhaps you can try it in debug mode and debugger?

Mirek

Subject: Re: TheIDE crashes when editing iml files
Posted by [yeohhs](#) on Wed, 01 Nov 2006 12:44:06 GMT
[View Forum Message](#) <> [Reply to Message](#)

Hello Bas,

I don't have that problem. I usually copy an existing iml file into a new project, then rename it. For icon files, I use Pelles C to open an existing icon, then copy and paste it into the iml file.

TheIDE I'm using now is version 610-dev4, the pre-compiled version that comes with MinGW.

Ok, Mirek, later I will try to run it in the debugger and debug mode. I have not yet compiled U++ libraries in debug mode.

Thanks and best regards,
Yeoh

Subject: Re: TheIDE crashes when editing iml files
Posted by [mirek](#) on Wed, 01 Nov 2006 12:52:16 GMT
[View Forum Message](#) <> [Reply to Message](#)

yeohhs wrote on Wed, 01 November 2006 07:44
I have not yet compiled U++ libraries in debug mode.

Well, all you need to do is to select uppsrc assembly, ide main package, switch to debug and press F5

It would be however better to do it with MSC... (better debugger).

Mirek

Subject: Re: TheIDE crashes when editing iml files
Posted by [yeohhs](#) on Wed, 01 Nov 2006 13:05:56 GMT
[View Forum Message](#) <> [Reply to Message](#)

OK, I will compile theIDE in debug mode.
I'm using MSC8, Free Edition.

Also, I have a bunch of .usrlog, .buglog and .crash files in C:\upp.
See attachment.

Thanks and best regards,
Yeoh

File Attachments

1) [theide_logs.7z](#), downloaded 2594 times

Subject: Re: TheIDE crashes when editing iml files
Posted by [yeohhs](#) on Wed, 01 Nov 2006 15:50:25 GMT
[View Forum Message](#) <> [Reply to Message](#)

I've compiled ide package for both release and debug mode with MSC8.

When I run it within theIDE, loaded MyUppApp package and tested on the iml files, both versions did not crash.

Best Regards,
Yeoh
--

Subject: Re: TheIDE crashes when editing iml files
Posted by [mirek](#) on Wed, 01 Nov 2006 18:33:50 GMT
[View Forum Message](#) <> [Reply to Message](#)

Too bad....

Mirek

Subject: Re: TheIDE crashes when editing iml files
Posted by [mirek](#) on Mon, 06 Nov 2006 09:31:57 GMT
[View Forum Message](#) <> [Reply to Message](#)

OK, Tom has just found a bug in .iml handling that caused crashes like this.

The only trouble is that this bug crashes only .iml files in old format (~ pre 610 version). Could that be the case?

Mirek

Subject: Re: TheIDE crashes when editing iml files

Posted by [yeohhs](#) on Mon, 06 Nov 2006 10:04:48 GMT

[View Forum Message](#) <> [Reply to Message](#)

I'm not sure whether I'm using the old format .iml files. I started with Ultimate++ 610 dev version. I can't remember where and how I got the iml file, possibly either from the template when I created a new project or copied from one of the examples and then renamed it.

Best Regards,
Yeoh

--

P.S. I'm not aware of the difference between the old and new format. Is it possible to tell from my earlier attachment: myuppapp_imlcrash.7z?

Subject: Re: TheIDE crashes when editing iml files
Posted by [mirek](#) on Mon, 06 Nov 2006 10:38:19 GMT

[View Forum Message](#) <> [Reply to Message](#)

Good news: MyUppApp.iml was in old format

Mirek

Subject: Re: TheIDE crashes when editing iml files
Posted by [yeohhs](#) on Mon, 06 Nov 2006 12:48:06 GMT

[View Forum Message](#) <> [Reply to Message](#)

Great news!

Thanks and best regards,
Yeoh
